

An aerial night view of Dublin, Ireland, showing the River Liffey flowing through the city. The city lights are visible, and a boat is on the river in the foreground. The sky is a mix of blue and orange from the sunset or sunrise.

Dublin

ITINERARY

FREE DUBLIN ITINERARY

Dublin

ITINERARY


ARRIVAL:

DEPARTURE:

EXPLORE
CENTRAL
DUBLIN

Morning

Begin your Dublin Itinerary at [Trinity College](#). Tour the university building and see the infamous [Book of Kells](#).

 [Compare Book of Kells Fast-Track Tickets](#)

Midday


Step back in time at the [Dublin Castle](#). Explore its state rooms, churches, Georgian palaces, museums, and gardens.

 Stop by the [Chester Beatty Library](#)!

DAY 1

Trinity College




 [Book Airport Transfer Options](#)

Afternoon

Walk around [Grafton Street](#), one of the two principal shopping streets in Dublin. Enjoy street performances and do some shopping. Drop by a local restaurant for a hearty Irish lunch.

Evening

Relax with traditional Irish music and dinner in [Temple Bar](#).

 Dinner At: [The Merchant's Arch](#) - Cozy, Live Music, Traditional Irish Bites



Dublin Castle

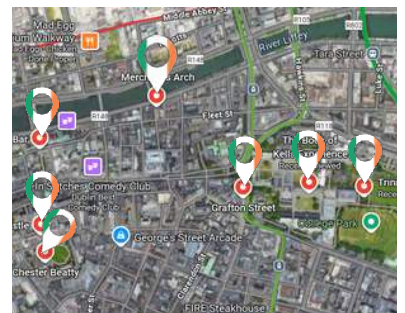
 [BOOK YOUR STAY IN DUBLIN](#)



Book of Kells



Temple Bar



[Check on Google Map](#)

Tourteller

Compare Tours & Activities in One Place

HISTORY & CULTURE

Morning + Midday

Visit [Kilmainham Gaol](#), a prison-turned-national monument. Learn about 100+ years of Irish history.

Visit the the [Guinness Storehouse](#) for Ireland's best pint.

Afternoon & Evening

Spend 1.5 hours at the [National Museum of Ireland](#).

🌙 Evening: Stroll along the [River Liffey](#) and have dinner in a local pub.

DAY 2

Kilmainham Gaol



Guinness Storehouse



Compare [Guided Tours Of Kilmainham Gaol](#)

DAY TRIPS AND RELAXATION

Option 1

Plan a day trip to the famous [Cliffs of Moher](#). Catch the stunning views of the Atlantic Ocean, [Aran Islands](#), and [Galway Bay](#) from these majestic sea cliffs.



Compare [Day Trips To Cliffs of Moher From Dublin](#)

Option 2

Head to the picturesque Irish village of [Howth](#). Take a coastal walk or enjoy water adventures.

🍷 Lunch Stop: [The Bloody Stream](#)

Evening

Relax at [St. Stephen's Green](#). Smell the flowers and soak in the atmosphere.

🌙 Dine nearby and go to bed.

DAY 3

Cliffs of Moher



Howth



St. Stephen's Green

QUICK TIPS

DISCOVER MORE IRELAND TRAVEL TIPS

- [Ultimate Tour Guide to the Republic of Ireland: Best Ireland tours, Irish Food, Dublin tours, and more!](#)



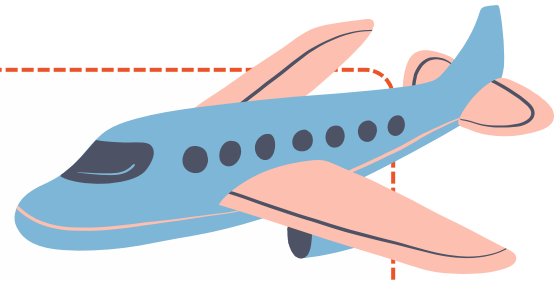
[CUSTOMIZE YOUR ADVENTURE](#)



Tourteller

Compare Tours & Activities in One Place

Travel Check List



IMPORTANT DOCUMENT

- Passport
- Identification
- Travel Tickets
- Visa
- Money : Cash / Credit
- Travel Insurance
- Important contacts
- Travel guide / Maps
- Hotel Reservation



TOILETRIES

- Soap / Body Wash
- Shampoo
- Toothpaste
- Toothbrush
- Towel
- Sunscreen
- Deodorant
- Floss
- Lip balm



ELECTRONICS

- Camera
- Charger
- Powerbank
- Universal Power Adapter
- Headphones
- Laptop



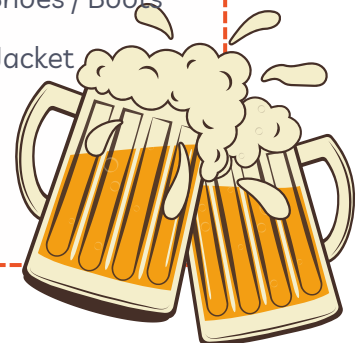
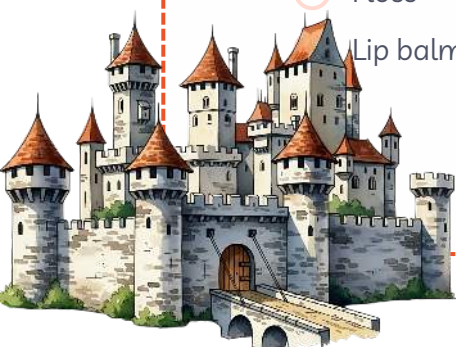
HYGIENE SUPPLIES

- Wet wipes
- Facial Masks
- Hand Sanitizer
- Tissue
- Feminine Products



CLOTHING

- Sweater / Cardigans
- T-shirts
- Long-sleeved tops
- Waterproof Shoes / Boots
- Lightweight Jacket
- Scarf



Tourteller

Compare Tours & Activities in One Place

Emergencies

 **IN THE EVENT OF AN EMERGENCY, PLEASE CONTACT THE RELEVANT DEPARTMENT LISTED BELOW**

- Emergencies: 112 or 999 (for need of police, fire brigade, or ambulance)
- Samaritan's: 116 123
- Tourist Assistance Service: 1890 365 700
- Gardai H.Q.: 01 666 0000

 **HOSPITALS WITH INTERNATIONAL CLINICS IN DUBLIN**

Beacon Hospital

- Address: Beacon Court, Bracken Rd, Sandyford Business Park, Dublin 18, D18 AK68, Ireland
- Tel: +353 1 293 6600
- Website: <https://www.beaconhospital.ie/>
- Hours: 10 AM - 7 PM
- Transportation: Take the Luas Green Line from St. Stephen's Green or Cherrywood to Sandyford. Beacon Hospital is less than a 10-minute walk from the Stillorgan Luas stop.

Mater Private Hospital

- Address: Eccles St, Phibsborough, Dublin, Ireland
- Tel: +353 1800 123 456
- Website: <http://www.materprivate.ie/>
- Hours: 24 hours
- Transportation: Take the Dublin Bus line 1 from Shaw Street to Upper Dorset Street. Follow the navigation app to locate Mater Private Network.

St. Vincent's University Hospital

- Address: Elm Park, Dublin 4, D04 T6F4, Ireland
- Tel: +353 1 221 4000
- Website: <https://www.stvincents.ie/>
- Hours: 24 hours
- Transportation: Take Dublin Bus No. 4, 7, 7A, 8, 17, or 84a, which stop near St. Vincent's University Hospital on Merrion Road.

The Clinical Marrakech

- Address: Northwood Ave, Santry, Dublin, D09 C523, Ireland
- Tel: +353 1 526 2000
- Hours: 7 AM - 11 PM
- Website: <http://www.sportssurgeryclinic.com/>
- Transportation: Walk, drive, or use public transportation to reach UPMC Sports Surgery Clinic in Santry, Dublin.

