



Oahu ITINERARY



FREE OAHU ITINERARY

Oahu ITINERARY

ARRIVAL:

DEPARTURE:

ARRIVAL AND **Morning** WAIKIKI

Upon arrival, you will check in at the hotel at the vibrant [Waikiki](#). This neighborhood is the best place to stay in Oahu. It is nestled within Honolulu, the capital city of Hawaii.

Middday

After a quick wash up, head to the infamous [Waikiki Beach](#). Bring your towel to lie down under the sun. You can also swim, surf, snorkel, or enjoy scuba diving.

Afternoon

After sunbathing for a while, visit the kid-friendly [Waikiki Aquarium](#). Check out displays of over 3,500 organisms of 490 marine animals.

Evening

You have multiple choices regarding things to do at night in Oahu. Explore the lively nightlife in Waikiki or enjoy a traditional luau in a local establishment. Or, go to bed early.

DAY 1 Waikiki



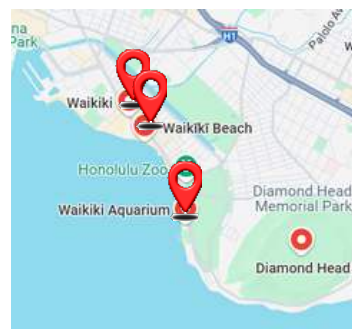
Clubbing in Waikiki



Waikiki Beach



Waikiki Aquarium



Check on Google Map

Tourteller

Compare Tours & Activities in One Place

PEARL HARBOR AND HISTORICAL SITES

Morning

Start your day with a trip to the [Pearl Harbor National Memorial](#). This place commemorates the deadly Pearl Harbor Attack of Dec 7, 1941.

Full Day

Continue your historical expedition with a trip to the [USS Arizona Memorial](#), [Battleship Missouri Memorial](#), and the [Pearl Harbor Aviation Museum](#). Each place takes visitors back to the Second World War period.



Compare  [USS Arizona Memorial Tickets](#)

DAY 2

Pearl Harbor



Battleship Missouri Memorial

NORTH SHORE ADVENTURE

Morning

The third day is all about exploring the island's [north shore](#). First visit the infamous [Dole Plantation](#), where you can ride a pineapple express and tour the plantation garden.



Check Out North Shore Activities

Afternoon

Continue your North Shore expedition to [Haleiwa](#), a hub for recreational activities. Visit the Hale'iwa Beach or [Waimea Bay](#) to try wild waves.

Evening

Catch a stunning sunset at the [Sunset Beach](#). It will be a perfect ending to your adventurous third day in Oahu.



Dole Plantation



[Check on Google Map](#)

DAY 3

Dole Plantation



Waimea Bay



Sunset Beach



**BOOK YOUR STAY
IN OAHU**

Tourteller

Compare Tours & Activities in One Place

**CHOOSE
YOUR
ADVENTURE**

Hikers

Hike up the magnificent [Diamond Head](#). This volcano's moderate hiking trail will leave anyone sweating after a climb.



Fun Enthusiast

If you are into water sports, visit the ultimate snorkeling destination, [Hanauma Bay](#). It features crystal-clear water.



Evening

End your fourth day by attending a traditional Hawaiian Luau at Waikiki. It includes a Hawaiian feast with live entertainment activities, such as hula dancing and lei-making.

**FOLLOW THE
ITINERARY OR
CREATE YOUR
OWN**

Day

You have two options for Day 5. One is to follow a step-wise itinerary, or create your own plan for the day. You can add any activities missed earlier in the trip. For instance, you can visit the [Polynesian Cultural Center](#), which has six island villages. It is renowned for its evening show, "HĀ: Breath of Life." You can also visit the infamous [Makapu'u Point Lighthouse](#). Follow the 2-hour trail to see the breathtaking views of Oahu's southeastern shoreline.

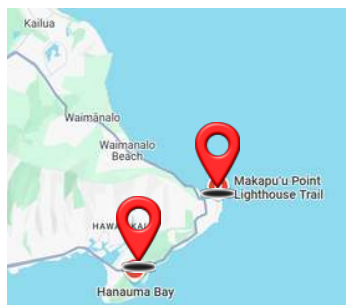


Hanauma Bay



DAY 5

**Polynesian
Cultural Center**



Diamond Head



**Polynesian
Cultural Center**



**Makapu'u Point
Lighthouse**



[Check on Google Map](#)

**CULTURAL
EXPLORATION
AND
DEPARTURE**

[Iolani Palace](#)

**The Only
Hawaiian US
Palace**

On your last day in Oahu, explore the city highlights, such as the [Iolani Palace](#). This palace was the resident for Hawaiian monarchs until the monarchy was overthrown in 1893.



**[Hawaii State
Capitol](#)**

**[Hawaii State
Capitol](#)**

**The Official Hawaii
Statehouse**

Tour the [Hawaii State Capitol](#), the official statehouse of Hawaii. It has Hawaiian architecture, two cone-shaped legislative chambers and a reflecting pool.

**[National Memorial
Cemetery of the
Pacific](#)**

**[National Memorial
Cemetery of the
Pacific](#)**

Punchbowl Cemetery

Your final stop will be the [National Memorial Cemetery of the Public](#). Pay respects to the late servicemen of the US Armed Forces and World War soldiers.



Evening

Prepare for departure or enjoy one last night out in [Oahu](#).

**[National Memorial
Cemetery of the
Pacific](#)**

DAY 5

[Iolani Palace](#)

SEE TOURS >>



[Iolani Palace](#)



[Oahu](#)



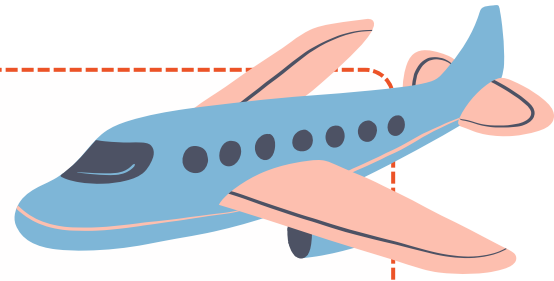
**DISCOVER MORE
CANCUN TRAVEL TIPS**

- [Time To Visit](#)
- [Where to Stay](#),
- [Things to Do](#)
- [Eat & Drink](#)
- [Free Things To Do](#)



**CUSTOMIZE
YOUR ADVENTURE**

Travel Check List



IMPORTANT DOCUMENT

- Passport / Identification
- Proof of Vaccination (if required)
- Travel Tickets
- Driver's License
- Money : Cash / Credit
- Visa (for foreigners)
- Important contacts
- Travel guide / Maps
- Hotel Reservation



TOILETRIES

- Soap / Body Wash
- Shampoo
- Toothpaste / Toothbrush
- Medications
- Towel / Beach Gear
- Reef-safe Sunscreen
- Deodorant
- Lip Balm with SPF
- Insect Repellent



ELECTRONICS

- Camera
- Portable Charger
- Power Adapters
- Laptop
- Headphones
- Waterproof Case



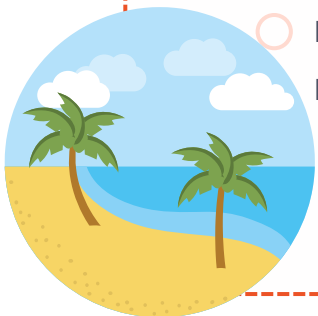
HYGIENE SUPPLIES

- Wet wipes
- Facial Masks
- Hand Sanitizer
- Tissue
- Feminine Products



CLOTHING

- Swimwear
- Sun Hats
- T-shirts
- Shorts
- Flip-flops
- Cover-ups



Emergencies



IN THE EVENT OF AN EMERGENCY, PLEASE CONTACT THE RELEVANT DEPARTMENT LISTED BELOW

- Honolulu Police Department: (808) 529-3111 (for theft, assault, & other crimes)
- Honolulu Fire Department: (808) 723-7139 (for general accidents & ambulance)
- Hawaii Tourism Authority: 1-800-464-2924 (for general travel-related questions)
- Emergencies: 911 (situations requiring immediate attention)



TOP HOSPITALS IN OAHU

- The Queen's Medical Center
 - Address: 1301 Punchbowl St, Honolulu, HI 96813, United States
 - Tel: 808-691-1000
 - Email: info@queens.org
 - Website: <https://www.queens.org/>
 - Hours: 24 hours
 - Transportation: Take the 20 Bus heading towards Aapai St + S King St stop. Get off at the nearest stop near the mentioned streets and walk to the entrance of The Queen's Medical Center.
- Lē'ahi Hospital
 - Address: 3675 Kilauea Ave, Honolulu, HI 96816, United States
 - Tel: (808) 733-8000
 - Fax: (808) 733-9800
 - Website: <https://leahi.hhsc.org/>
 - Email: hhsc@hhsc.org
 - Hours: 24 hours
 - Transportation: Take a taxi or follow the 2, 2L, or 14 bus routes to the Lē'ahi Hospital.
- Adventist Health Castle
 - Address: 640 Ulukahiki St, Kailua, HI 96734, United States
 - Tel: (808) 263-5500
 - Website: <https://www.adventisthealth.org/castle/>
 - Email: contact@amerimedhospitals.com
 - Hours: 24 hours
 - Transportation: Ride a car or take a taxi to the Adventist Health Castle, which is on the Windward side of Oahu.
- Kaiser Permanente Moanalua Medical Center
 - Address: 3288 Moanalua Rd, Honolulu, HI 96819, United States
 - Tel: 808-432-0000
 - Hours: Monday-Friday: 8:30 AM - 5 PM; Saturday-Sunday: Closed
 - Website: <https://healthy.kaiserpermanente.org/hawaii/facilities/Kaiser-Permanente-Moanalua-Medical-Center-100434>
 - Transportation: Take a 53 or 54 bus to Moanalua Road, then walk for two minutes to Kaiser Permanente-Moanalua Medical Center.

